



B.N.C.TOOLING Co.,Ltd.

BNCTOOLING.COM
BNCTOOLINGSHOP.COM

69/90 Hatairat Rd., Minburi ,Minburi Bangkok (Thailand) 10510

SCHMIDT
control instruments

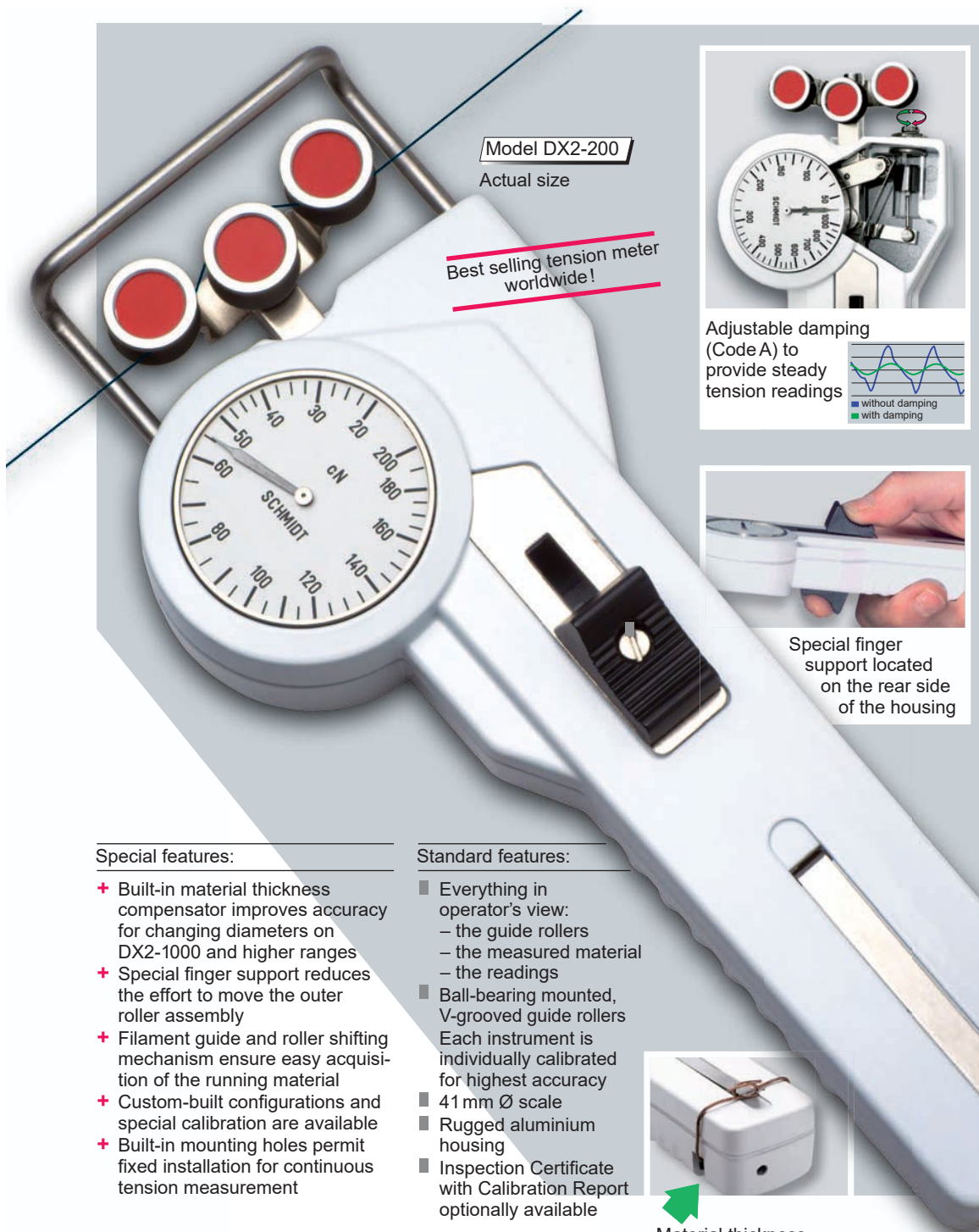
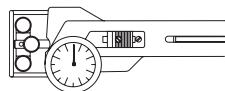


A Hand-Held, mechanical
DX Series

DX SERIES

12 Tension ranges
from 10 - 50 cN to 5 - 20 daN

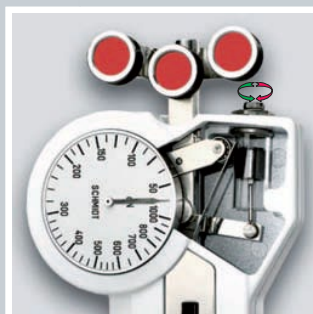
Universal tension meters
for most industrial applications



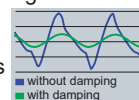
Model DX2-200

Actual size

Best selling tension meter
worldwide!



Adjustable damping
(Code A) to
provide steady
tension readings



Special finger
support located
on the rear side
of the housing

Special features:

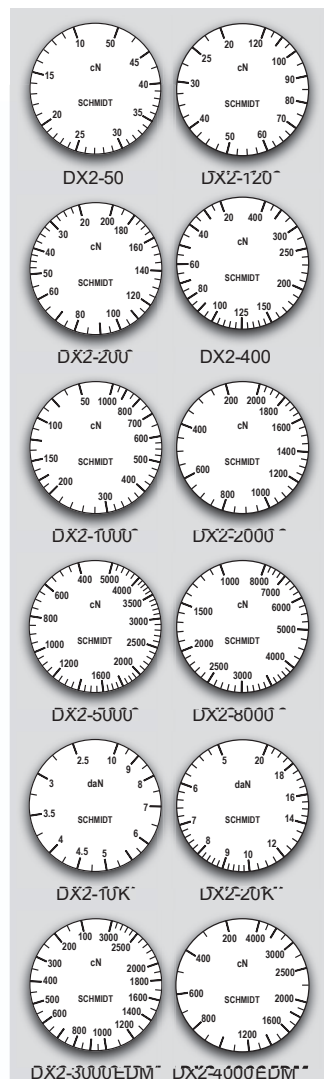
- + Built-in material thickness compensator improves accuracy for changing diameters on DX2-1000 and higher ranges
- + Special finger support reduces the effort to move the outer roller assembly
- + Filament guide and roller shifting mechanism ensure easy acquisition of the running material
- + Custom-built configurations and special calibration are available
- + Built-in mounting holes permit fixed installation for continuous tension measurement

Standard features:

- Everything in operator's view:
 - the guide rollers
 - the measured material
 - the readings
- Ball-bearing mounted, V-grooved guide rollers
- Each instrument is individually calibrated for highest accuracy
- 41 mm Ø scale
- Rugged aluminium housing
- Inspection Certificate with Calibration Report optionally available



Material thickness
compensator with material
sample inserted



DX2-3000EUM DX2-4000EUM

SCHMIDT scales are manufactured according to the most stringent quality requirements. Printed scales are not used.

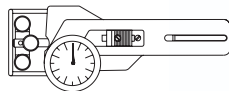
Instead, each scale is individually marked for the instrument involved. This ensures highest quality.

Our special procedure makes it possible to provide tension meters fine tuned to a specific tension range, or calibrated to customer supplied material, or units of measure such as g or kg.



A Hand-Held, mechanical
DX Series

Model DX2



Available Models

MODEL	Tension Ranges cN	Measuring Head Width* mm	SCHMIDT Calibration Material**	Material thickness com- pensator included
DX2-50	10-50	66	PA: 0.12 mm Ø	
DX2-120	20-120	66	PA: 0.12 mm Ø	
DX2-200	20-200	66	PA: 0.12 mm Ø	
DX2-400	20-400	66	PA: 0.20 mm Ø	
DX2-1000	50-1000	66	PA: 0.30 mm Ø	
DX2-2000	200-2000	116	PA: 0.50 mm Ø	
DX2-5000	400-5000	116	PA: 0.80 mm Ø	
DX2-8000	1000-8000	116	PA: 1.00 mm Ø	
DX2-10K	2.5-10 daN	116	PA: 1.00 mm Ø	
DX2-20K-L	5-20 daN	216	PA: 1.50 mm Ø	

Other tension ranges and measuring head widths available on request.
Other units of measure available – g or kg.

* Depending on model, either width of filament guide or
outer distance between outside guide rollers

** Suitable for 95 % of applications (see also chart on page 11)
PA = Polyamide Monofilament

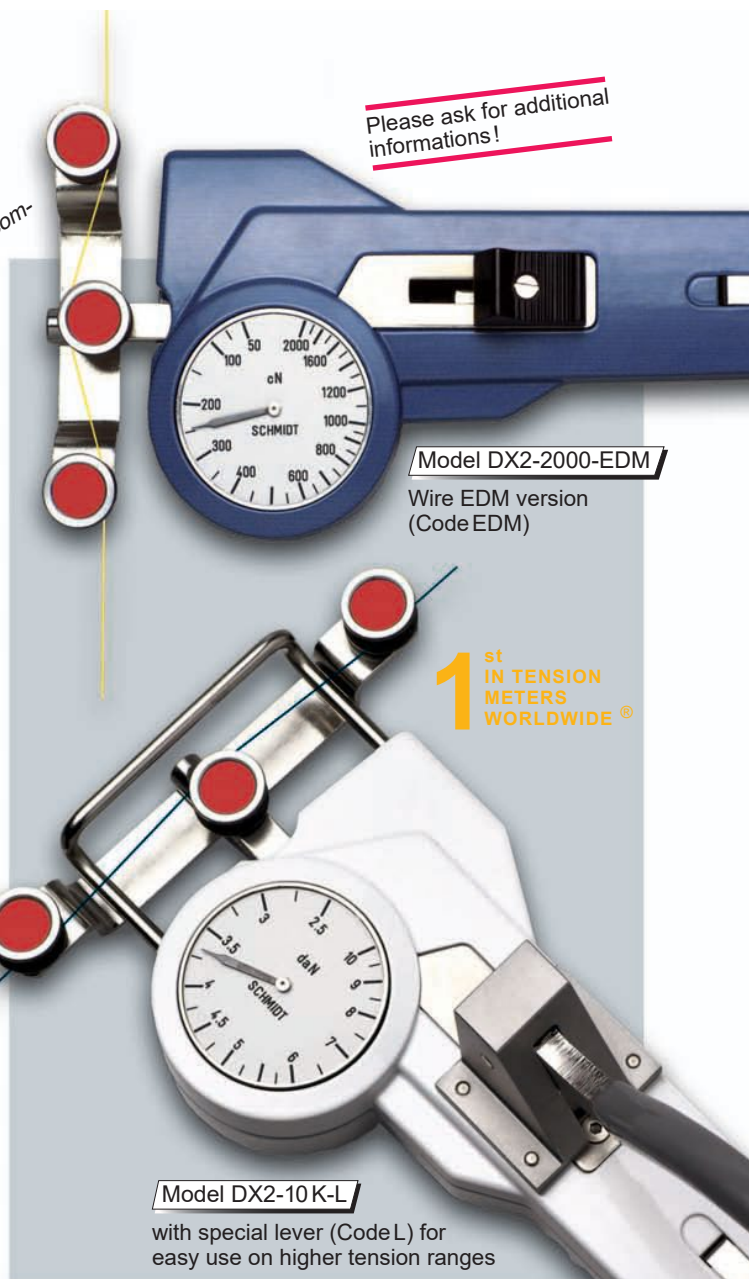
Guide Rollers

	Line Speed Vmax. ... m/min	Roller Material
V-grooved		
Standard	2000	Hard-coated aluminium
Code K	3500	Hard-coated aluminium
Code H	5000	Plasma-coated aluminium (for Model DX2-120 and higher ranges)
Code T	1000	Plastic (POM) black
Code W	1000	Nickel-plated steel
Code ST	1000	Hardened steel
Code B	1000	Tempered steel for tire cord
Code CE2	1000	Aluminium ceramic-coated
Code ASY	1000	Hard-coated aluminium*
Code ASYB	1000	tempered steel for tire cord* (for Model DX2-120 and higher ranges)
asymmetrical groove		*Gauge without filament guide
U-grooved		
Code U	2000	Hard-coated aluminium

→ see page E →

Optional Accessories

Code A	Air damping (Model DX2-120 to DX2-5000 only)
Code L	Special lever (standard for Model DX2-20 K) – recommended for Model DX2-10 K –
Code M	Memory pointer (DX2-120 and higher ranges)
Code EDM	Version for electro discharging machines Model DX2-2000-EDM: 50-2000 cN Model DX2-3000-EDM: 100-3000 cN Model DX2-4000-EDM: 200-4000 cN



Please ask for additional
informations!

Model DX2-2000-EDM

Wire EDM version
(Code EDM)

1st
IN TENSION
METERS
WORLDWIDE®

Model DX2-10K-L

with special lever (Code L) for
easy use on higher tension ranges

Specifications

DX Series

Calibration:	According to SCHMIDT factory procedure
Accuracy:	±1 % full scale or ±1 graduation on scale
Scale diameter:	41 mm
Temperature range:	10 - 45°C
Air humidity:	85 % RH, max.
Housing material:	Die-cast aluminium
Housing dimensions:	188 x 85 x 45 mm (L x W x H)
Weight, net (gross):	up to DX2-10 K approx. 470 g (1000 g) DX2-20 K-L approx. 580 g (2000 g)

Special calibration using customer supplied samples is available Please supply a sample of at least 5 m in length.