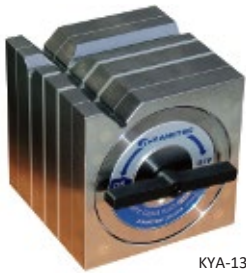


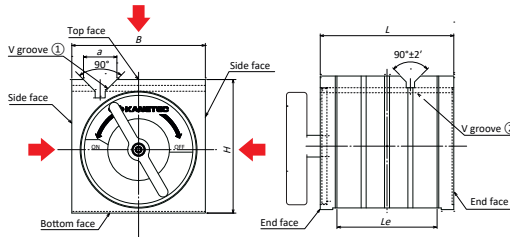


BLOCKS, HOLDERS, PERMANENT MAGNETIC CHUCK

Model KYA SQUARE TYPE BLOCK



KYA-13B



↑ indicates the attractive face.

Application

Holding tools for marking and light duty machining.
Holding tools for three-dimensional measuring instruments and various measuring systems.

Features

- Workpieces can be held on three faces of the top (V face) and both side faces.
- The ON/OFF lever is detachable. (The length of the opposite sides of the hex hole is 8 mm.)
- Drip-proof and oil-resistant construction.
- An M8 tapped hole is provided on the top for lifting (KYA-18 and 20B only).
- Ultra-precision finishing is also available. Please contact us.

(in)

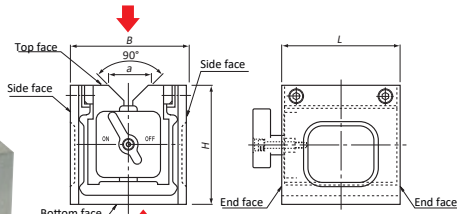
Model	Holding Power		Applicable Diameter		Dimensions					Mass
	V groove①	V groove②	V groove①	V groove②	B	H	L	Le	a	
KYA- 8B	120N (12kgf)	100N (10kgf) $\phi 10$	$\phi 8$ (0.31) - $\phi 15$ (0.59)	$\phi 10$ (0.39) - $\phi 30$ (1.18)	80 (3.14)	80 (3.14)	80 (3.14)	60 (2.36)	20 (0.78)	3.5kg/ 7.7 lb
KYA-10B	200N (20kgf)	120N (12kgf) $\phi 10$	$\phi 10$ (0.39) - $\phi 30$ (1.18)	$\phi 10$ (0.39) - $\phi 30$ (1.18)	100 (3.93)	100 (3.93)	100 (3.93)	72 (2.83)	26 (1.02)	7kg/ 15 lb
KYA-13B	300N (30kgf)	250N (25kgf) $\phi 10$	$\phi 10$ (0.39) - $\phi 26$ (1.02)	$\phi 10$ (0.39) - $\phi 26$ (1.02)	125 (4.92)	125 (4.92)	125 (4.92)	87 (3.42)	30 (1.18)	14kg/ 30 lb
KYA-15B	400N (40kgf)	400N (40kgf)	$\phi 10$ (0.39) - $\phi 38$ (1.49)	$\phi 10$ (0.39) - $\phi 38$ (1.49)	150 (5.90)	150 (5.90)	150 (5.90)	107 (4.21)	32 (1.25)	23kg/ 50 lb
KYA-18B	300N (30kgf)	300N (30kgf)	$\phi 14$ (0.55) - $\phi 50$ (1.96)	$\phi 14$ (0.55) - $\phi 50$ (1.96)	180 (7.08)	180 (7.08)	180 (7.08)	123 (4.84)	38 (1.49)	37kg/ 81 lb
KYA-20B	650N (65kgf)	650N (65kgf)	$\phi 14$ (0.55) - $\phi 50$ (1.96)	$\phi 14$ (0.55) - $\phi 50$ (1.96)	200 (7.87)	200 (7.87)	200 (7.87)	155 (6.10)		51kg/ 112 lb

※The holding power is based on the V face and $\phi 20$ round steel bar. ※Note that when workpieces are held on two or more faces simultaneously, the holding power of each face drops.

Model KYB SQUARE TYPE BLOCK



KYB-13A



↑ indicates the attractive face.

Application

Holding tools for marking and light duty machining.
Holding tools for three-dimensional measuring instruments and various measuring systems.

Features

- A workpieces can be held on one face of the top (V face).
- The ON/OFF lever is detachable. (The length of the opposite sides of the hex hole is 8 mm.)
- Drip-proof and oil-resistant construction.
- Ultra-precision finishing is also available. Please contact us.

(mm (in))

Model	Holding Power	Applicable Diameter	Dimensions				Mass
			B	H	L	a	
KYB- 8A	180N (18kgf) or over.	$\phi 10$ (0.39) - $\phi 32$ (1.25)	80 (3.14)	80 (3.14)	80 (3.14)	29 (1.02)	2.5kg/ 5.5 lb
KYB-10A	343N (35kgf) or over.	$\phi 13$ (0.51) - $\phi 50$ (1.96)	100 (3.93)	100 (3.93)	100 (3.93)	40 (1.57)	6kg/ 13 lb
KYB-13A	400N (40kgf) or over.	$\phi 10$ (0.39) - $\phi 30$ (1.18)	125 (4.92)	125 (4.92)	125 (4.92)		8kg/ 17 lb
KYB-15A	589N (60kgf) or over.	$\phi 14$ (0.55) - $\phi 66$ (2.59)	150 (5.90)	150 (5.90)	150 (5.90)	50 (1.96)	12kg/ 26 lb
KYB-18A	600N (60kgf) or over.	$\phi 14$ (0.55) - $\phi 66$ (2.59)	180 (7.08)	180 (7.08)	180 (7.08)		16kg/ 35 lb
KYB-20A	785N (80kgf) or over.	$\phi 14$ (0.55) - $\phi 66$ (2.59)	200 (7.87)	200 (7.87)	200 (7.87)		22kg/ 48 lb

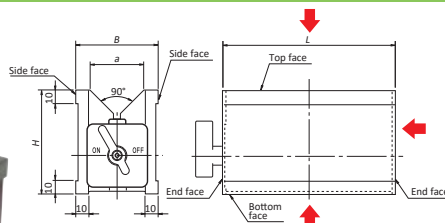
※The holding power is based on the V face and $\phi 20$ round steel bar.

Model KVA MAGNETIC V-HOLDER



KVA-2A

KVA-1A



↑ indicates the attractive face.

Application

Holding tools for round bar marking, drilling, tapping and grinding of irregularly shaped workpieces.
Holding tools for three-dimensional measuring instruments and various measuring systems.

Features

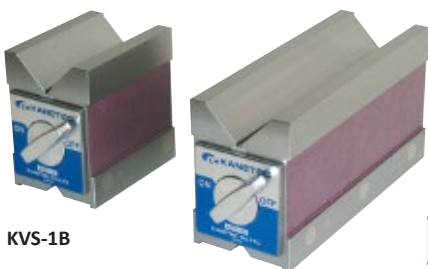
- Workpieces can be held on the top face (V face), bottom face and rear face.
- The ON/OFF lever is detachable. (The length of the opposite sides of the hex hole is 8 mm.)
- Drip-proof and oil-resistant construction.
- Ultra-precision finishing is also available. Please contact us.

(mm (in))

Model	Holding Power	Applicable Diameter	Dimensions				Mass
			B	H	L	a	
KVA-1A	300N (30kgf) or over.	$\phi 8$ (0.31) - $\phi 50$ (1.96)	60 (2.36)	73 (2.87)	80 (3.14)	38 (1.49)	2kg/ 4.4 lb
KVA-2A	450N (45kgf) or over.	$\phi 8$ (0.31) - $\phi 50$ (1.96)			125 (4.92)		3kg/ 6.6 lb
KVA-3A	700N (70kgf) or over.	$\phi 8$ (0.31) - $\phi 50$ (1.96)			180 (7.08)		4.5kg/ 10 lb

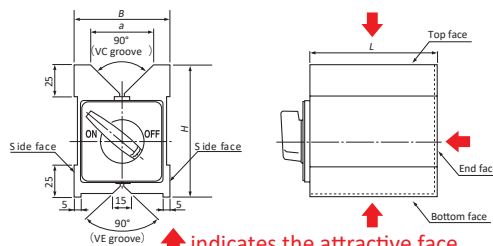
※The holding power is based on the V face and $\phi 20$ round steel bar. ※Note that when workpieces are held on two or more faces simultaneously, the holding power of each face drops.

Model KVS MAGNETIC V-HOLDER



KVS-1B

KVS-2B



↑ indicates the attractive face.

Application

Suitable for securing irregularly shaped workpieces for grinding and light duty cutting such as drilling and tapping.

Features

- The special construction exerts a strong magnetic force on three faces of top, bottom and end.
- Usable for inspection also. Two accuracy grades; standard and special are available.
- The magnetic force can be turned on and off easily by turning the lever.
- Drip-proof construction.

(mm (in))

Model	Holding Power	Applicable Diameter		Dimensions				Mass
		Steel bar	VC groove	B	a	L	H	
KVS-1B	0.7kN (.70kgf)	$\phi 8$ (0.31) - $\phi 68$ (2.67)	$\phi 8$ (0.31) - $\phi 68$ (2.67)	75 (2.95)	50 (1.96)	100 (3.93)	105 (4.13)	4.5kg/ 9.9 lb
KVS-2B	1.0kN (100kgf)	$\phi 8$ (0.31) - $\phi 68$ (2.67)	$\phi 8$ (0.31) - $\phi 68$ (2.67)			200 (7.87)		9.0kg/ 19.8 lb

※The holding power is based on $\phi 20$ round steel bar. ※Note that when workpieces are held on two or more faces simultaneously, the holding power of each face drops.