



Tension Meter

6 Tension ranges available
from 3 - 30 cN up to 20 - 300 cN

Tension Meter ZD2



Specifications

Calibration:	According to SCHMIDT factory procedure
Accuracy:	±1 % full scale or ±1 graduation on scale
Scale diameter:	54 mm
Temperature range:	10 – 45 °C
Air humidity:	85 % RH, max.
Housing material:	Plastic (POM)
Weight, net (gross):	Approx. 220 g (Approx. 620 g)

- Economical mechanical tension meter for checking fibers, threads and fine wires with low tensions up to max. 300 cN
- Universal measuring instrument with large guide rollers groove Ø 12 mm
- Tension Meter for a variety of applications in the textile and wire industry

Special Features

- The analog display of tension meter ZD2 shows changing and fluctuating tensions fast and enables an optimal process adjustment
- Filament guide and roller shifting mechanism ensure easy acquisition of the running material
- Large, easy to read scale (54 mm Ø)
- Light weight

Standard Features

- Everything in operator's view:
 - the guide rollers
 - the measured material
 - the readings
- Ball-bearing mounted, V-grooved guide rollers
- Each instrument is individually calibrated for highest accuracy
- Tension meter with high-strength plastic housing
- Certificate of Compliance with the order 2.1 according EN 10204 is included
- Optionally available: Inspection Certificate 3.1 according EN 10204 with calibration report

Available Models

Model	Tension Range	Measuring Head Width*	SCHMIDT Calibration Material**
ZD2-30	3 – 30 cN	63 mm	PA: 0.12 mm Ø
ZD2-50	5 – 50 cN	63 mm	PA: 0.12 mm Ø
ZD2-100	10 – 100 cN	63 mm	PA: 0.12 mm Ø
ZD2-150	20 – 150 cN	63 mm	PA: 0.12 mm Ø
ZD2-200	20 – 200 cN	63 mm	PA: 0.12 mm Ø
ZD2-300	20 – 300 cN	63 mm	PA: 0.20 mm Ø



Scales

SCHMIDT scales are manufactured according to the most stringent quality requirements. Printed scales are not used. Instead, each scale is individually marked for the instrument involved. This ensures highest quality. Our special procedure makes it possible to provide tension meter ZD2

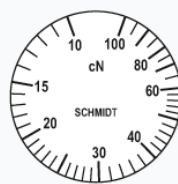
- calibrated to custom supplied material
- fine tuned to a specific tension range
- other units of measure such as g



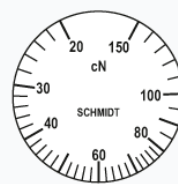
ZD2-30



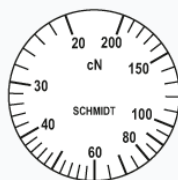
ZD2-50



ZD2-100



ZD2-150



ZD2-200



ZD2-300

Dimensions

