



B.N.C.TOOLING Co.,Ltd.

BNCTOOLING.COM
BNCTOOLINGSHOP.COM

69/90 Hatairat Rd., Minburi ,Minburi Bangkok (Thailand) 10510

SCHMIDT
control instruments



Z SERIES

10 Tension ranges
from 1-5 cN to 20-300 cN

Economical low tension measuring instruments
for checking fibers, yarns and fine wires

A Hand-Held, mechanical
Z Series



Special features:

- + Light weight
- + Large, easy to read scale (54 mm Ø)
- + Filament guide and roller shifting mechanism ensure easy acquisition of the running material

Standard features:

- Everything in operator's view:
 - the guide rollers
 - the measured material
 - the readings
- Ball-bearing mounted, V-grooved guide rollers
- Each instrument is individually calibrated for highest accuracy
- Housing made of high-strength plastic
- Inspection Certificate with Calibration Report optionally available

Slim filament guide with small guide rollers – ideal for limited access space

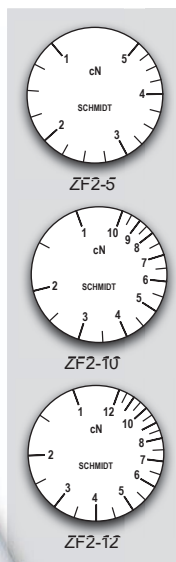


Model ZF2-12
Actual size

Model ZD2-100
Actual size

1st
IN TENSION
METERS
WORLDWIDE®

With bigger rollers for universal use



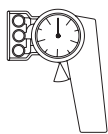
ZF2-5

ZF2-10

ZF2-12



A Hand-Held, mechanical Z Series



Most popular tension meter in the textile industry with small rollers!

Model ZF2

Available Models	Tension Ranges cN	Measuring Head Width* mm	SCHMIDT Calibration Material**
MODEL			
ZF2-5	1-5	43	Filament: 25tex
ZF2-10	1-10	43	Filament: 25tex
ZF2-12	1-12	43	Filament: 25tex
ZF2-20	2-20	43	Filament: 25tex
ZF2-30	3-30	43	PA: 0.12 mm Ø
ZF2-50	5-50	43	PA: 0.12 mm Ø
ZF2-100	10-100	43	PA: 0.12 mm Ø

Other tension ranges available on request. Other units of measure available, such as g.

* Width of filament guide

** Suitable for 95% of applications (see also chart on page 11)
PA = Polyamide Monofilament

Guide Rollers

Guide Rollers	Line Speed v _{max} ... m/min	Roller Material
V-grooved		
Standard	900	Hard-coated aluminium
Code K	2000	Hard-coated aluminium
Code T	450	Plastic (POM) black
Code W	450	Nickel-plated steel

→ see page E →

Specifications

ZF2 Series

Calibration:	According to SCHMIDT factory procedure
Accuracy:	±1% full scale or ±1 graduation on scale
Scale diameter:	54 mm
Temperature range:	10 - 45 °C
Air humidity:	85% RH, max.
Housing material:	Plastic (POM)
Housing dimensions:	157 x 85 x 32 mm (L x W x H)
Weight, net (gross):	approx. 200 g (600 g)

Special calibration using customer supplied samples is available:
Please supply a sample of at least 5 m in length.

Model ZD2

Universal tension meter for a variety of applications in the textile and wire industries

Available Models	Tension Ranges cN	Measuring Head Width* mm	SCHMIDT Calibration Material**
MODEL			
ZD2-30	3-30	63	PA: 0.12 mm Ø
ZD2-50	5-50	63	PA: 0.12 mm Ø
ZD2-100	10-100	63	PA: 0.12 mm Ø
ZD2-150	20-150	63	PA: 0.12 mm Ø
ZD2-200	20-200	63	PA: 0.12 mm Ø
ZD2-300	20-300	63	PA: 0.20 mm Ø

Other tension ranges available on request. Other units of measure available, such as g.

* Width of filament guide

** Suitable for 95% of applications (see also chart on page 11)
PA = Polyamide Monofilament

Guide Rollers

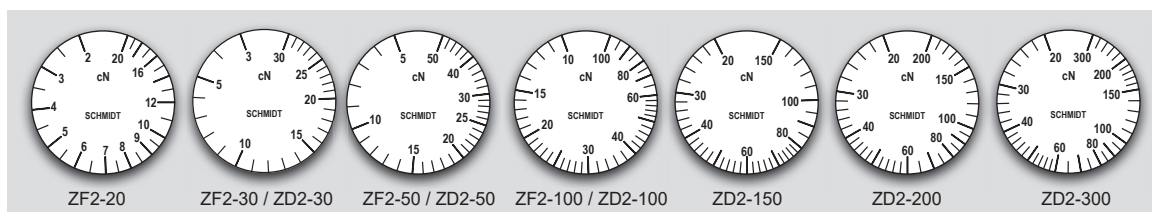
Guide Rollers	Line Speed v _{max} ... m/min	Roller Material
V-grooved		
Standard	2000	Hard-coated aluminium
Code K	3500	Hard-coated aluminium
Code H	5000	Plasma-coated aluminium (for Model ZD2-100 and higher ranges)
Code T	1000	Plastic (POM) black
Code W	1000	Nickel-plated steel
Code ST	1000	Hardened steel
Code CE 2	1000	Aluminium ceramic-coated

→ see page E →

Specifications

ZD2 Series

Calibration:	According to SCHMIDT factory procedure
Accuracy:	±1% full scale or ±1 graduation on scale
Scale diameter:	54 mm
Temperature range:	10 - 45 °C
Air humidity:	85% RH, max.
Housing material:	Plastic (POM)
Housing dimensions:	157 x 85 x 32 mm (L x W x H)
Weight, net (gross):	approx. 220 g (620 g)



SCHMIDT scales are manufactured according to the most stringent quality requirements. Printed scales are not used. Instead, each scale is individually marked for the instrument involved. This ensures highest quality. Our special procedure makes it possible to provide tension meters fine tuned to a specific tension range, or calibrated to custom supplied material, or units of measure such as g.