



**B.N.C.TOOLING Co.,Ltd.**

BNCTOOLING.COM  
BNCTOOLINGSHOP.COM



HELIOS • PREISSER

## 0212 Quality measuring tool set, 8 piece

INCLUDING  
ONE POCKET CALIPER  
OF YOUR CHOICE



### Content

- Pocket calipers in 5 different types of choice
- External micrometer with carbide measuring faces, measuring range 0-25 mm, reading 0.01 mm
- Flexible steel rule, stainless steel, measuring range 200 mm, graduation mm / mm, 13 x 0.5 mm
- Knife square, hardened, DIN 875/00, 100 X 70 mm, with non-glare knife edge
- Knife edge, hardened and ground, DIN 874/00, length 100 mm
- Scriber, carbide tipped, hexagonal handle made of one piece, with pocket clip, length 180 mm
- Radius gauge, special steel, 1'7 sheets, concave and convex, with locking nut, measuring range 1.0- 7.0 mm
- Screw pitch gauge, combined metric ISO- and Whitworth thread, 48 blades, increments 0.4 - 7.0 / 4- 62

### Shipment

- Wooden case

Marked	Measuring range mm	Ablesung mm	Ablesung inch	Tiefenmaß mm	Best. Nr.
Set mit Taschenmessschieber DUO - FIX (0190 501)					
	0-150	0.05	1/128	rect.	0212 520
Set mit DIGI-MET® Taschenmessschieber (1320 416 / 417)					
	0-150	0.01	.0005	rund 1.5	0212 522
	0-150	0.01	.0005	rect.	0212 524
Set mit DIGI-MET® Taschenmessschieber IP67 (1326 416 / 417)					
	0-150	0.01	.0005	rund 1.5	0212 526
	0-150	0.01	.0005	rect.	0212 528

Marked = excess length/excess weight

Marked = includes a F.O.C. calibration certificate, traceable to national standards

## DIGI-MET® QuickStart Electronic

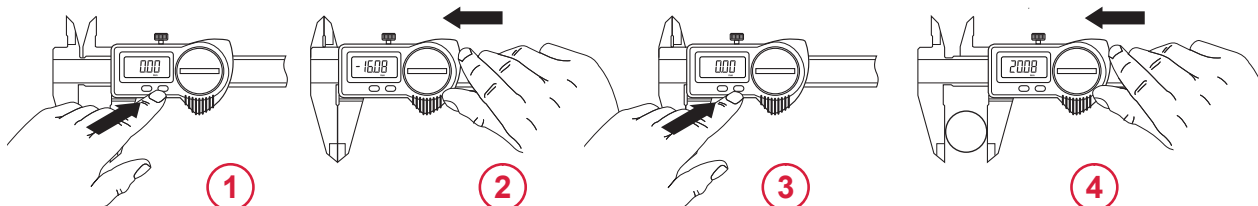
QuickStart- Electronic with the QuickLock- Function for only one zero setting

All digital calipers with the QuickStart-Electronic also have the QuickLock Function. Only set the zero position once, zero position remains stored for all further measurements. When the QuickLock Function is activated a lock symbol appears in the display, this ensures that the zero position is protected against any operating error caused by accidental usage of the operating keys (keys are locked). The caliper is immediately ready for measurement; once the caliper is switched ON or the slide is moved, the display is automatically activated.

The need to reset to zero as with a conventional caliper once it is switched on is obsolete.

### Conventional

- ① Switch ON
- ② Close the measuring jaws
- ③ Set to zero
- ④ Result of measurement



### QuickStart Electronic

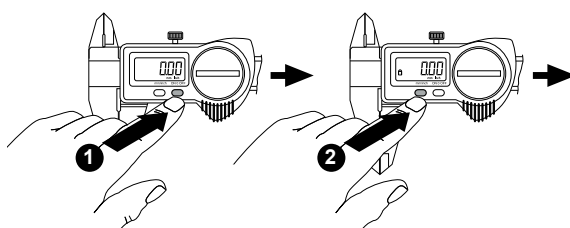


Press the ON key or move the slide

## DIGI-MET® QuickLock-Function

### 1. Set to zero

### 2. Activate the QuickLock Function



### Advantages of the QuickLock Function

- The caliper is immediately ready for measurement
- Lock symbol appears in the display. This ensures that the zero position is protected against any operating error caused by accidental usage of the operating keys (keys are locked)