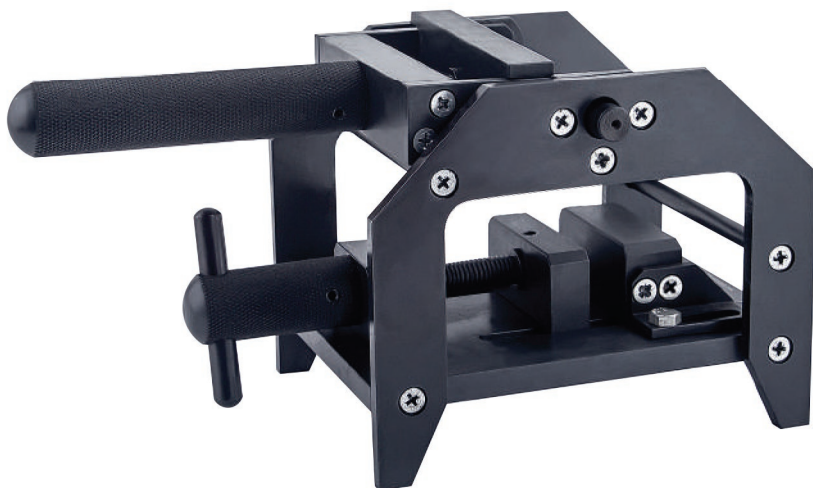


## Bending Coating Tester NOVOTEST BEND-M1519



The device complies with **ISO 1519-73**, **DIN 53 152** and applies to paints and specifies a method for determining the elasticity of the film by bending.

The device allows to measure the elasticity and strength of coatings through bending the metal plate with tested coating around a set of cylindrical rods with diameters from 2 mm to 32 mm.

## Bending Test Conical Mandrel NOVOTEST BEND-6860



The NOVOTEST BEND-6860 is used to determine the elasticity or resistance, adhesion and elongation of coatings on sheet metal in accordance with **ISO 6860**, **ASTM D 522-A**, **BS 3900-E11**, **ECCE T7**.

The sample is clamped against a conical mandrel and is bent around the mandrel by a roller mounted on a hand operated lever.

The diameter of the mandrel at the point where the coating of the sample starts to crack can be determined from a scale (3-37 mm) marked on the sample clamp.



**B.N.C.TOOLING Co.,Ltd.**

[BNCTOOLING.COM](http://BNCTOOLING.COM)  
[BNCTOOLINGSHOP.COM](http://BNCTOOLINGSHOP.COM)

☎ 02-918-8020  
02-918-8021(Fax.)

✉ [bnctooling@hotmail.com](mailto:bnctooling@hotmail.com) / [sales@bnctooling.com](mailto:sales@bnctooling.com)

☎ 089-788-5199  
084-8744-883



**NOVOTEST**