



Model MB-MX

HIGH LOCK BASE

Tightening torque + clamp force + fine adjustment function all improved!

Mechanical lock & fine movement adjuster



The dial gage is not included.

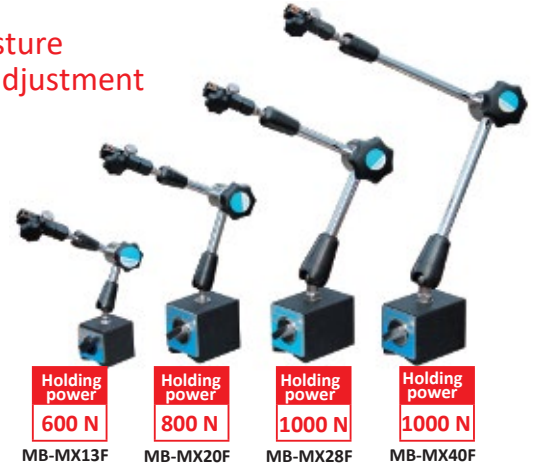
Application

While these bases are used as measuring tool holders like magnetic bases, they can also be used to hold sensors in place.

Features

- Any posture can be set by tightening a knob to lock every part.
- The clamp system is adjustable steplessly. Turning lightly achieves it. **Quick lock mechanism**
- A wide variety of models, small to large, are available to suit your applications.
- The dial gage mounting part can be adjusted finely.
- The arm can be adjusted freely in angle and direction and provides stable, shake-free positioning.

Free posture by dial adjustment

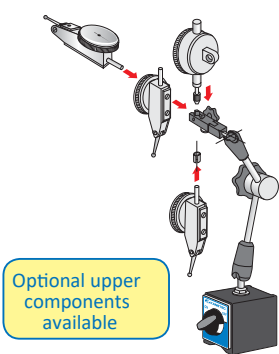


Holding power
600 N
800 N
1000 N
1000 N

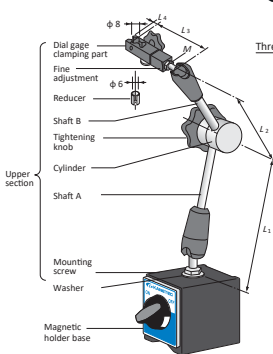
MB-MX13F MB-MX20F MB-MX28F MB-MX40F

Model	M1	B1
MB-MX13F		6
MB-MX20F	M6 (Coarse) xL7	7
MB-MX28F		8
MB-MX40F	M8 (Coarse) xL8	

Consistent and highly accurate measurement

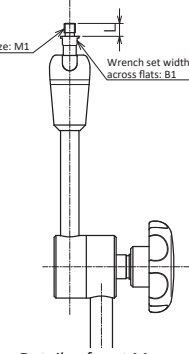


Optional upper components available



<Dial gage mounting>

<Names/dimensions>



<Details of part M and dimensions>

Model	Lock Mechanism	Holding Power	Magnetic Holder Base			Arm					Arm Mounting Tapped Hole	Indicator Clamp		Mass	Feature
			Width	Length	Height	L ₁	L ₂	L ₃	L ₄	M		Stem Hole	Dovetail		
MB-MX13F	Mechanical lock	600N (60kgf)	40	(1.57)	40 (1.57)	75 (2.95)	50 (1.96)	64 (2.51)	6.5 (0.25)	M6 (0.23) x7 (0.28)	M6 (0.23) x1 (0.03)	φ8 (0.31) φ6 (0.23) (When reducer is used)	6.5 (0.25)	0.7kg/ 1.7 lb	Smallest
MB-MX20F		800N (80kgf)		58.5 (2.30)	116 (4.56)	75 (2.95)	65 (2.55)	M8 (0.31) x1.25 (0.04)			1.4kg/ 3.1 lb			Small	
MB-MX28F		1000N (100kgf)	50 (1.96)	73 (2.87)	55 (2.16)	120 (6.29)	115 (4.52)	64 (2.51)						2.0kg/ 4.4 lb	Standard
MB-MX40F						160 (6.66)	175 (6.88)	66 (2.59)			M8 (0.31) x8 (0.31)			2.1kg/ 4.8 lb	Long arm

The holding power is based on a test piece of S5400, 10 mm thick, ground surface.

Model MB-OX

HIGH LOCK BASE

Hydraulic & fine movement adjuster

Application

While these bases are used as measuring tool holders like magnetic bases, they can also be used to hold sensors in place.

Features

- A hydraulic system that tightens joints in three places by one-step operation.
- The arm can be adjusted freely, which facilitates locating the mounted measuring instrument.
- Equipped with a fine movement adjuster.

Optional upper components available



The dial gage is not included.

Model	Lock Mechanism	Holding Power	Magnetic Holder BaseArm						Arm Mounting Tapped Hole	Indicator Clamp		MassAccessory	
			Width	Length	Height	L ₁	L ₂	L ₃		Stem Hole	Dovetail		
MB-OX	Hydraulic type	1000N (100kgf)	50 (1.96)	73 (2.87)	55 (2.16)	140 (5.51)	110 (4.33)	81 (3.18)	M8 (0.31) x1.25 (0.04)	φ8 (0.31) φ6 (0.23)	6.5 (0.25)	2.0kg/ 4.4 lb	Replenish oil

The holding power is based on a test piece of S5400, 10 mm thick, ground surface. Recommended replenish oil: Idemitsu Daphne Super Multi Oil or equivalent

MB-OX

Holding power
1000 N



Model MB-X

HIGH LOCK MINI BASE

Mechanical lock & fine movement adjuster

Small and simple, suitable for use in limited space.



MB-PSX
Holding power
300 N

MB-PSX-V
Holding power
300 N

MB-CX
Holding power
160 N

MB-CX-V
Holding power
160 N

The dial gage is not included.
Model MB-CX has no magnetic force ON/OFF selection. The upper section is common with Model MB-PSX.

Application

While these bases are used as measuring tool holders like magnetic bases, they can also be used to hold sensors in place.

Features

- A mechanical lock system that tightens joints in three places by onestep operation.
- The arm can be adjusted freely, which facilitates locating the mounted measuring instrument.
- Models MB-CX-V/PSX-V are equipped with a fine movement adjuster.

Unit: mm (in.)														
Model	Lock Mechanism	Holding Power	Magnetic Holder Base			Arm				Arm Mounting Tapped Hole	Indicator Clamp		Mass	Feature
			Width	Length	Height	L ₀	L ₁	L ₂	L ₃		Stem Hole	Dovetail		
MB-CX	Mechanical Type	160N (16kgf)	28 (1.10)	28 (1.10)	28 (1.10)	12 (0.47)	46 (1.81)	46 (1.81)	39 (1.53)	M5 (0.19) × 0.8 (0.03)	φ6 (0.23) × 2 (0.25)	0.38kg / 0.83 lb	Small, V attractive face	
MB-CX-V		300N (30kgf)	30 (1.18)	34 (1.33)	35 (1.37)	14 (0.55)			57 (2.24)			0.5 kg / 1.10 lb	Small, V attractive face, fine movement adjuster	
MB-PSX		300N (30kgf)	30 (1.18)	34 (1.33)	35 (1.37)	14 (0.55)			39 (1.53)			0.38kg / 0.83 lb	Small, magnet switchover	
MB-PSX-V		300N (30kgf)	30 (1.18)	34 (1.33)	35 (1.37)	14 (0.55)			57 (2.24)			0.5 kg / 1.10 lb	Small, magnet switchover, fine movement adjuster	