



B.N.C.TOOLING Co.,Ltd.

BNCTOOLING.COM
BNCTOOLINGSHOP.COM

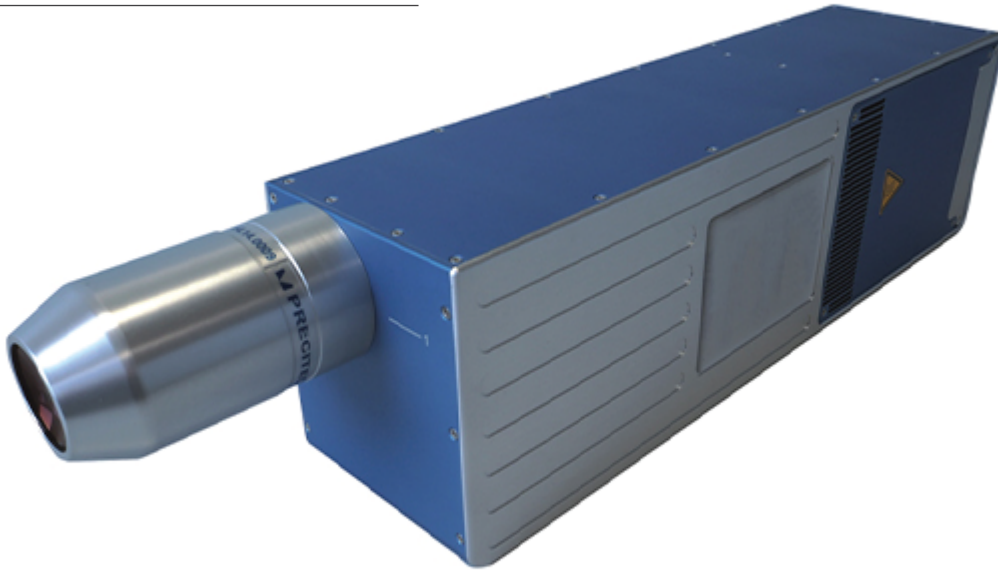
69/90 Hatairat Rd., Minburi ,Minburi Bangkok (Thailand) 10510



Vision Measuring Machine

CHRcodile CLS Series

CHRcodile CLS Series



CHRcodile CLS, the PRECITEC chromatic confocal line sensor offers an incredibly fast 3D measurement of 384,000 points persecond with nanometric scale resolution. Thanks to its robust and highly integrated design, CHRcodile CLS is perfectly suited for easy integration into inspection machines in the production line, including harsh industrial environments. An outstanding dynamic range and an excellent signal to noise ratio make the CHRcodile CLS the best measuring tool for all materials – including polished and highly tilted surfaces. With its unrivaled performance/price ratio, CHRcodile CLS is the best choice for ultrafast 3D inspection.

Characteristics

EFFICIENT

- High-speed
- Non-contact
- Precise

VERSATILE

- Instantaneous profile measurement
- Inline inspection
- Interchangeable optical probes
- Distance and Thickness

User Friendly

- Maintenance-free
- Easy to integrate
- Robust



Vision Measuring Machine

Technical Specifications Chrocodile CLS Series

Application	Distance, thickness
Lines /second	100 - 2000, optionally 6000 Hz ¹⁾
Number of points / line	192
Measuring Range	Depends on optical probe
Synchronization with external devices	Trigger input, synchronizing output, 5 encoder inputs
Interface	Ethernet, service ports: RS-422, USB
Transfer Rate	100 Mbit (Ethernet), 9600 - 921600 Baud (RS-422), 921600 Baud (USB: virtual comport)
Light Source	LED
Operating Temperature	+5°C up to +50°C
Storage Temperature	-20°C up to +70°C
Dimension without probe (w x h x d)	391 mm x 100 mm x 114 mm
Weight	4 kg
Protection Class	IP 50 (DIN 40050/ IEC 144)
Supply Voltage	24 +/- 10% V DC (with separate power supply 100 - 240 V AC / 50 Hz - 60 Hz)
Rated Power	40 W
Note	SDK available. NET Framework 4 and higher compatible
Order Number	5007994 (straight); 5007995 (90° angled); 5008859 (frequency upgrade up to 6000 Hz)

1) With reduction of measuring range